

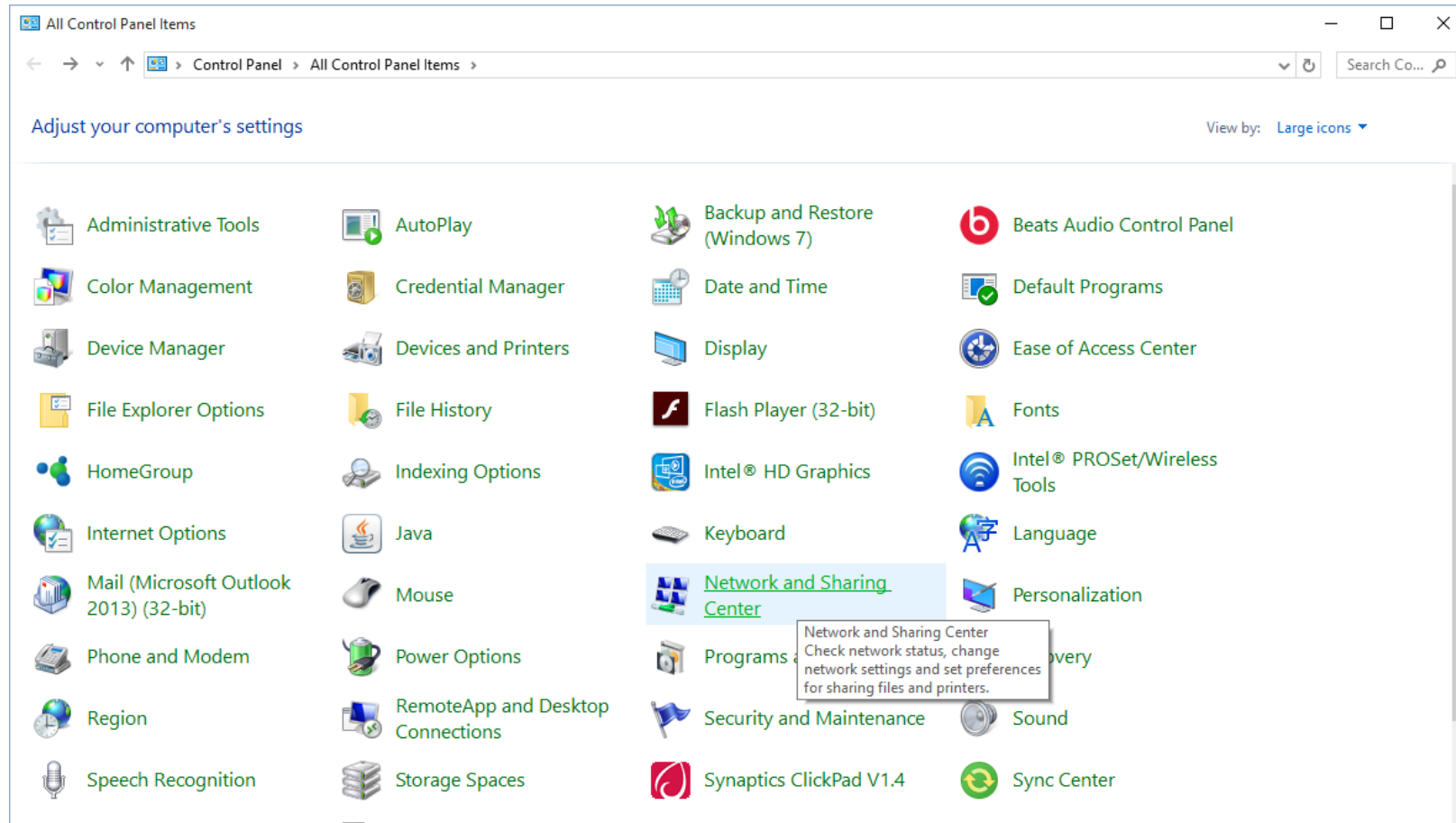
# How to connect to Touro- 802.1x Wi-Fi SSID

TouroCOM IT Department

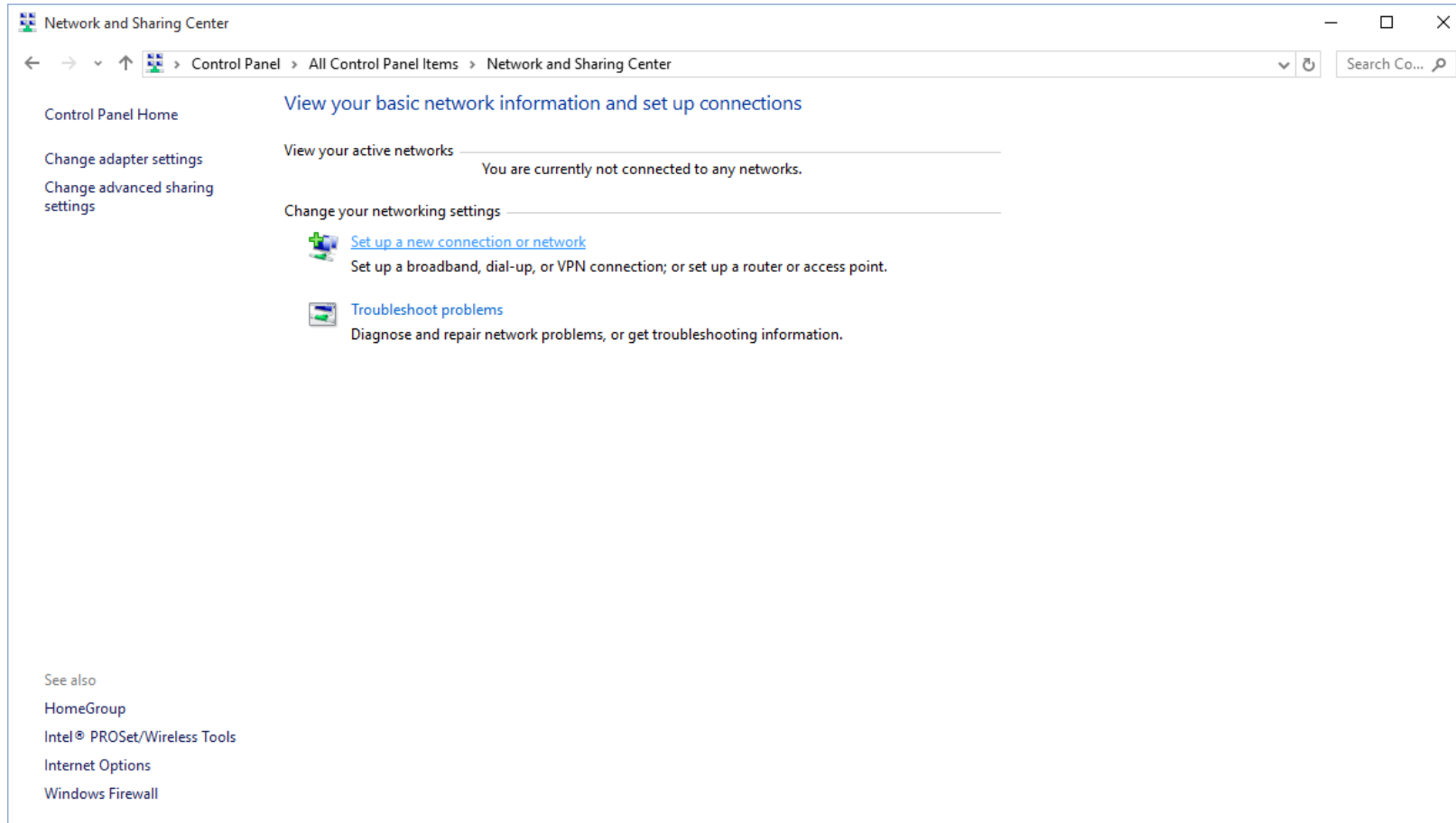
# Connecting to 802.1x

- Mac users can simply accept the certificate and connect to 802.1x.
- Windows users must follow the instructions on the rest of this document in order to connect to 802.1x

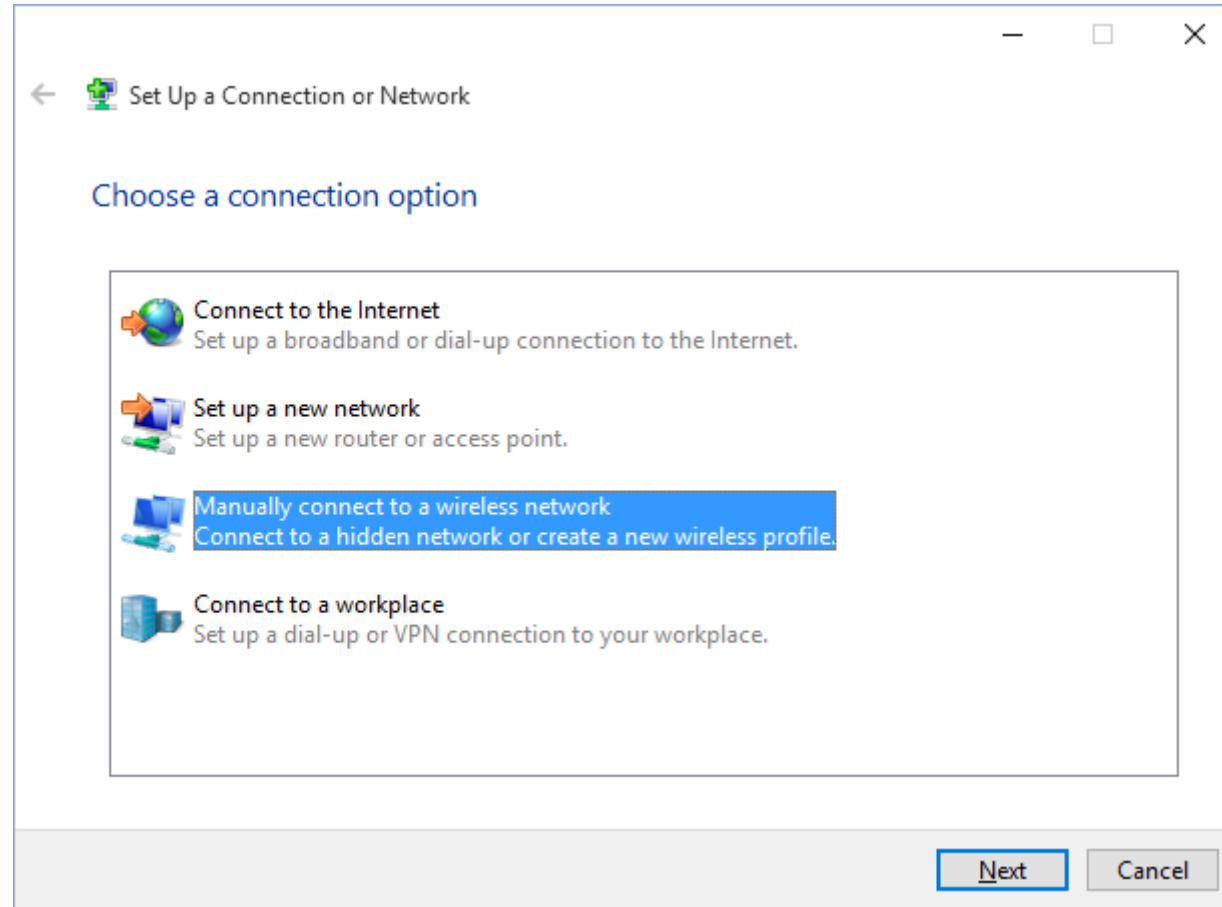
# Open Control Panel and Select Network and Sharing Center



# Select “Set up a new connection or network



# Select “Manually connect to a wireless network”



Enter network name: “Touro-802.1x” and select security type: “WPA2-Enterprise”

← Manually connect to a wireless network

Enter information for the wireless network you want to add

Network name:

Security type:

Encryption type:

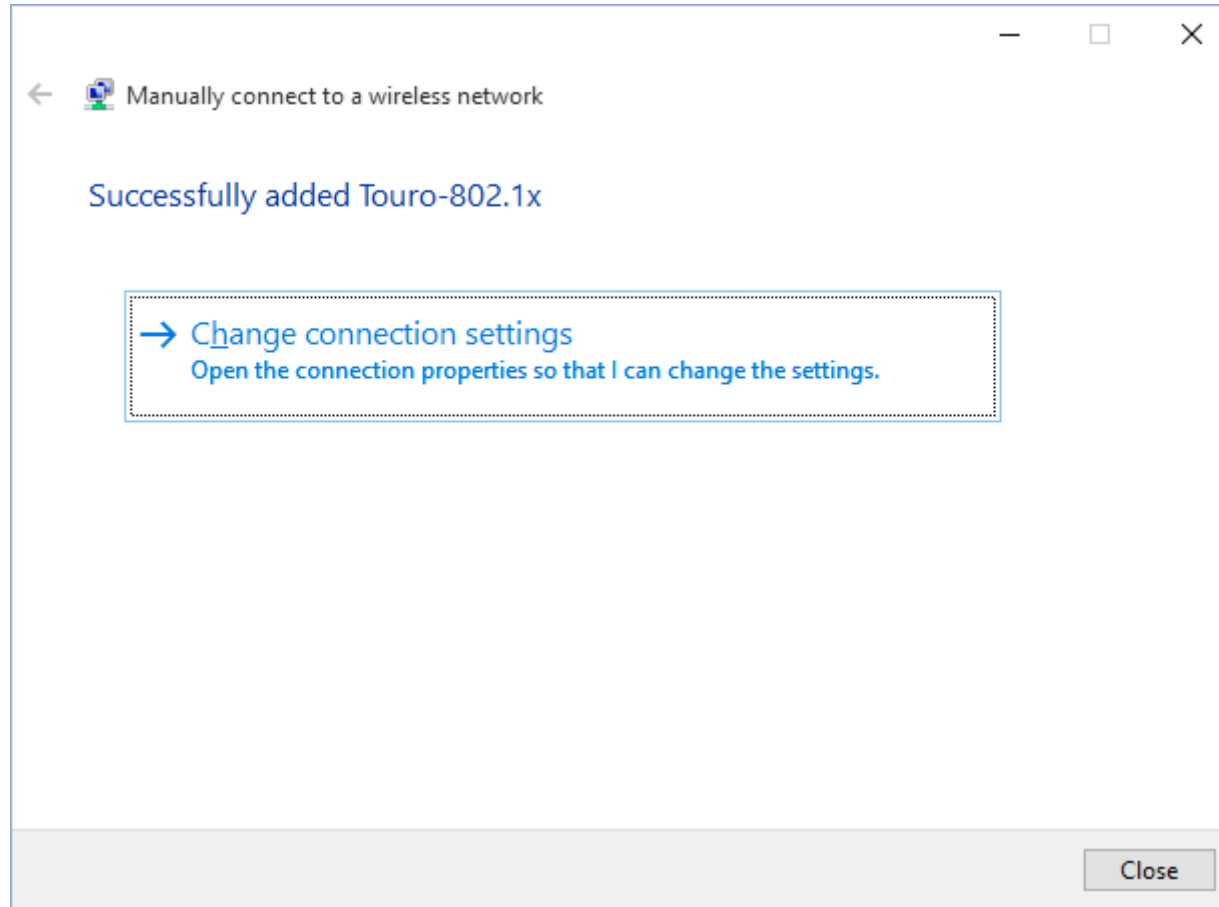
Security Key:   Hide characters

Start this connection automatically

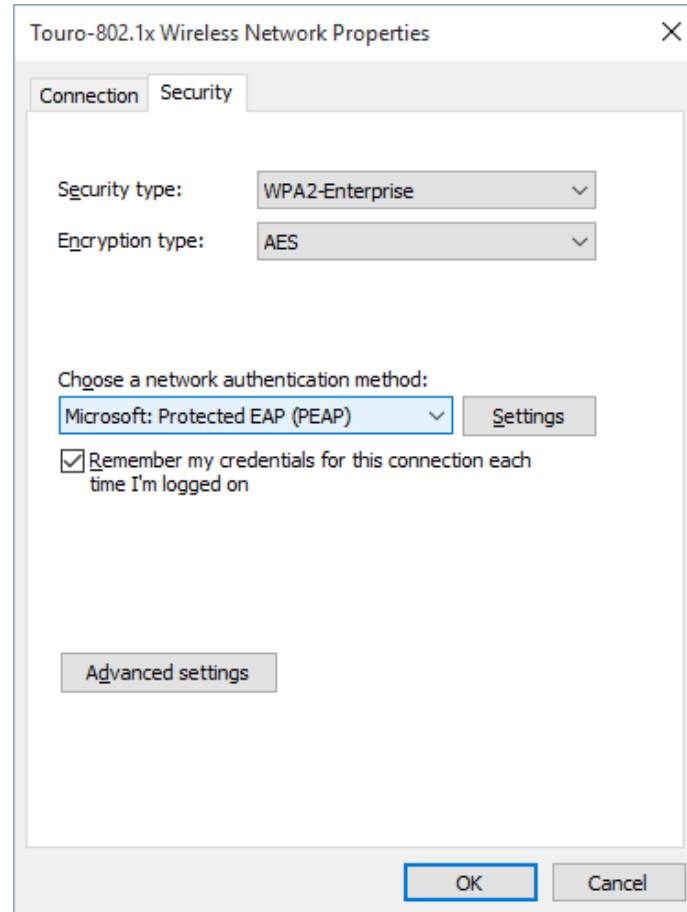
Connect even if the network is not broadcasting

Warning: If you select this option, your computer's privacy might be at risk.

# Select change connection settings

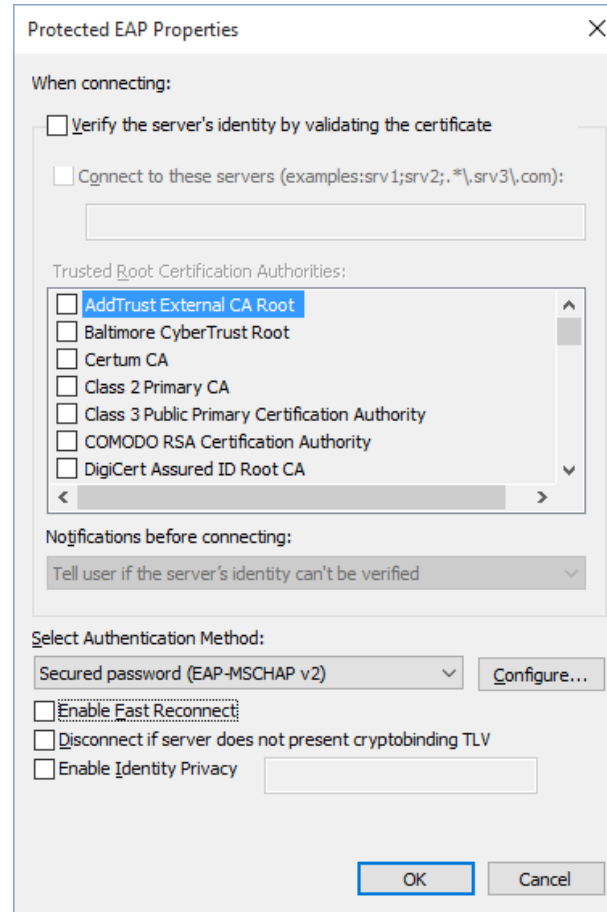


Go to the security tab and press Settings next to Microsoft: Protected EAP



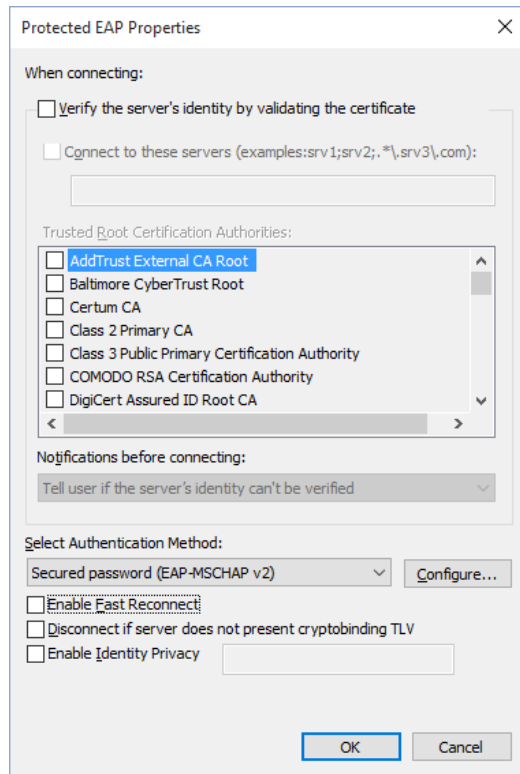


# Uncheck verify the server's identify and enable fast reconnect

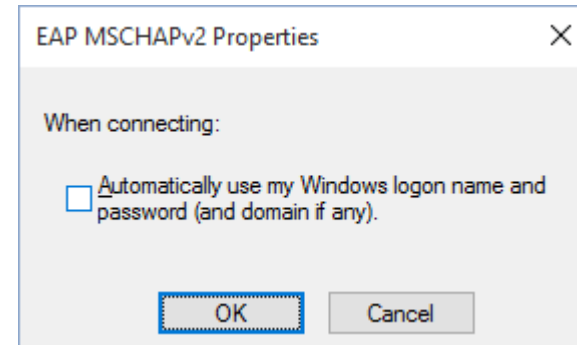


# Protected EAP Properties Part 2

**Press Configure next to Secured password**

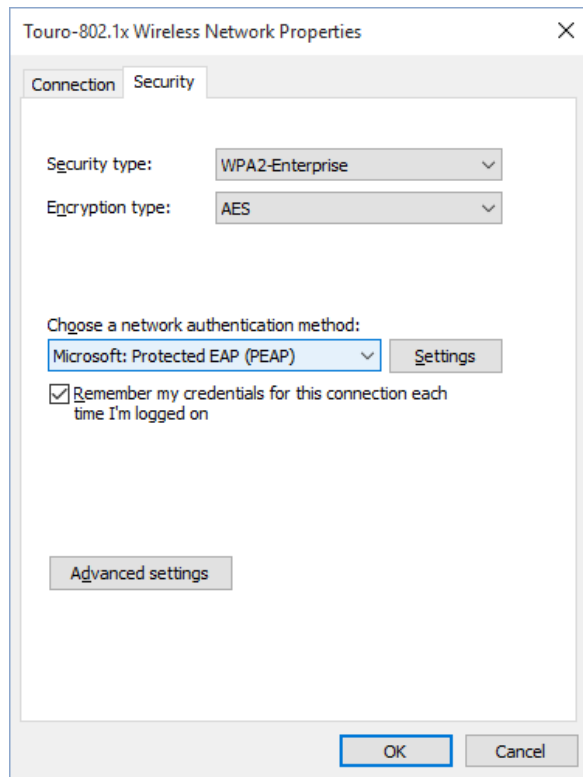


**Make sure this option is unchecked**

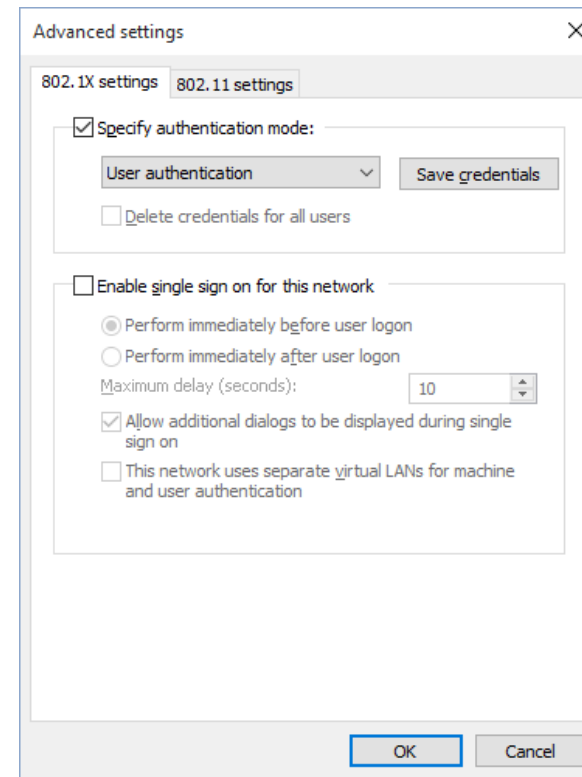


# Return to previous properties window

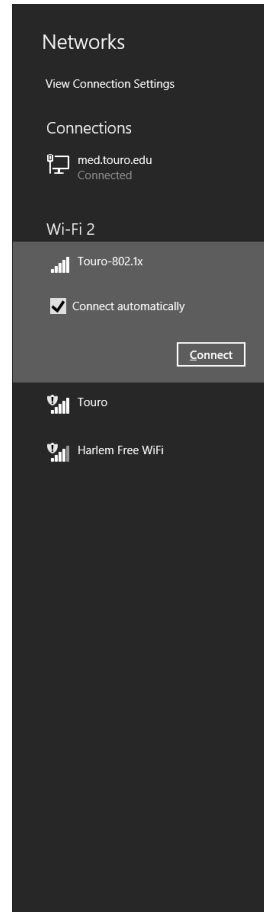
Selected “Advanced settings”



Enable Specify authentication mode and set to User authentication

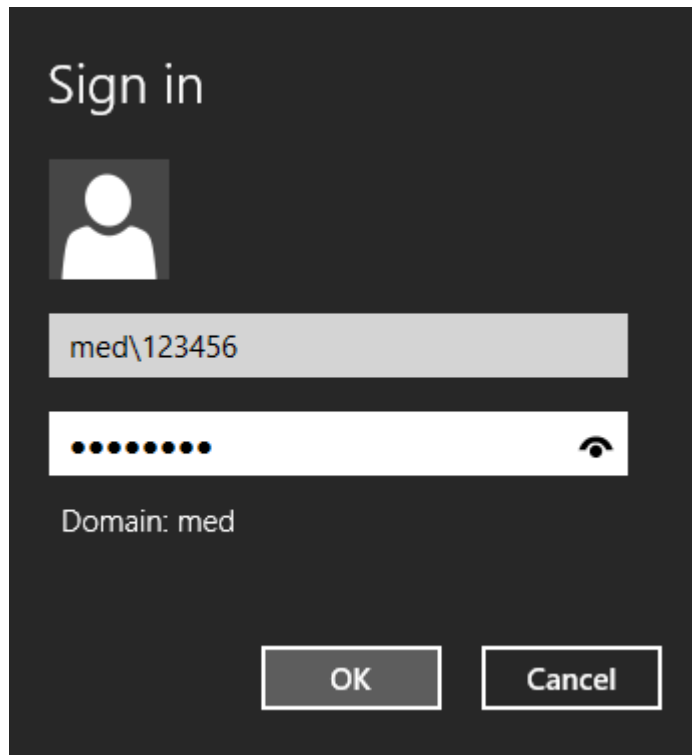


# Connect to Touro-802.1x



# Sign in with your credentials, med\username and password

## Windows 8/8.1



## Windows 10

